

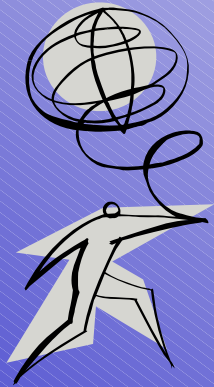


EUROPEAN SMALL HYDROPOWER ASSOCIATION

ESHA – European Small Hydropower Association

Renewable Energy House, Rue du Trône 26, B - 1000 Bruxelles, Belgium

Tel: +32.2.546.19.45 Fax: +32.2.546.19.47, e-mail: esha@arcadis.be, I: www.esha.be



Thematic Network on SHP

General Overview

Gema San Bruno



CONTEXT

- ✓ **Funded** by the European Commission, DG TREN (Transport & Energy).
- ✓ **Framework:** EU's FP5 (Fifth Framework Programme for Research, Technological Development and Demonstration). Specific programme: Energy, Environment and Sustainable Development (ENERGIE). Part B « Thematic Network ».





OVERALL AIM

IDENTIFY future Research and Market
NEEDS of SHP sector within the EU and
the Candidate Countries





OBJECTIVES

Overcome **Barriers** & promote **Better Exploitation**
→ Stakeholders discussions and information exchange:

- Cost
- Environmental integration
- Public Acceptance
- Integration into energy systems
- Technological issues
- Fulfilment of White Paper: +4500 MW in 2010





KEY THEMES

- A) Marketing for SHP
- B) Environmental integration
- C) Engineering aspects





NETWORK STRUCTURE

- ✓ **Steering Group**
- ✓ **Key Actor Discussion Groups:**
 - Marketing
 - Environment
 - Engineering
- ✓ **e-Network**
- ✓ **SHP Network Secretariat**

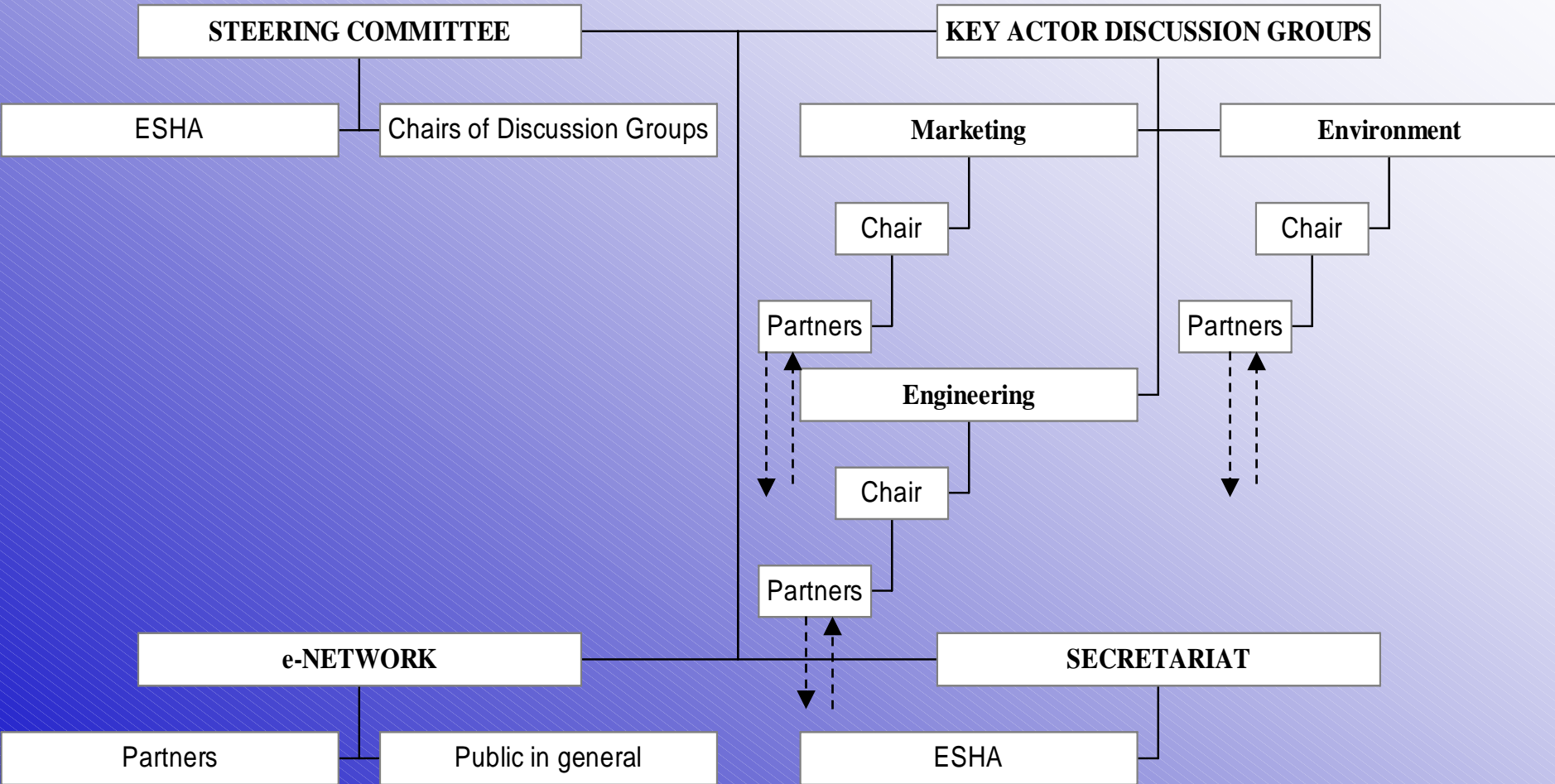




SHP Thematic Network



Network Structure





WORK PACKAGES

- ✓ **I**-Network Coordination
- ✓ **II**-Facilitation and Management of key Discussion Groups
- ✓ **III**-Web-site development, management and electronic networking
- ✓ **IV**- Evaluation for RD&D Coordination
- ✓ **V**- Development of strategies and publications
- ✓ **VI**- Dissemination of information





PARTNERS

- ✓ **ESHA**: Coordinator & Chair Marketing
- ✓ **ÖVFK**: Chair Environment
- ✓ **MHyLab**: Chair Engineering (mechanical up to 1 MW)
- ✓ **SCPTH**: Chair Engineering (mechanical 1-10 MW)
- ✓ **ADEME**: Marketing
- ✓ **IT Power**: Marketing (international collaboration)
- ✓ **Lithuanian Hydropower Association**: Marketing
(Candidate Countries)
- ✓ **Studio Frosio**: Environment
- ✓ **EPFL-LCH**: Engineering (civil)
- ✓ **ISSET**: Engineering (electrical)
- ✓ **SERO**: Engineering (civil)





DELIVERABLES

- ✓ **Strategy document on EU RD&D activities and needs. Annual**
- ✓ **Layman's Guide in German, French and Swedish (2004)**
- ✓ **Checklist for SHP developers in French, German and Italian (2004)**
- ✓ **SHP situation in Candidate Countries (2004)**
- ✓ **Brochure on Environmental aspects of SHP in English, Italian and German (2005)**
- ✓ **Report on SHP Statistics. Annual**





MILESTONES

- ✓ Establishment of all **Key Actors Groups**
- ✓ Establishment of **e-Network**
- ✓ Availability of **Publications**
- ✓ Availability of up-to-date **RD&D Strategy for SHP**





PARTICIPATION

✓ TNSHP WEB SITE

- Free & open
- Information & connection
- Participation: virtual and real

✓ HOW?

- Send contact details: gema.sanbruno@esha.be

We strongly recommend you to visit ESHA Web Site, www.esha.be

